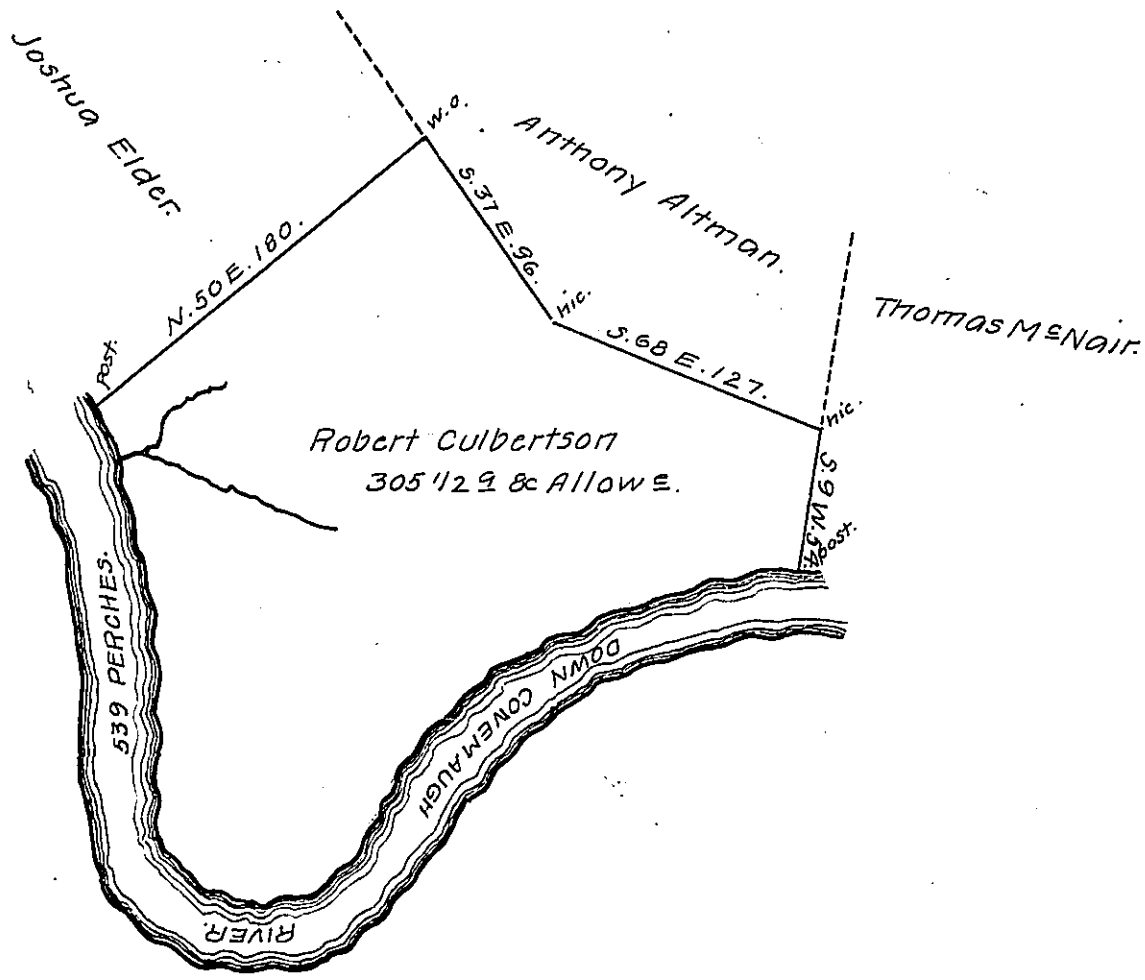


Several Courses and distances down the Conemaugh River.

S. 79 1/2	W	38
S. 70	W	89
S. 47	W	22
S. 43	W	52
S. 29	W	64
S. 73	W	22
N. 85	W	16
N. 68	W	24
N. 17	W	30
North		39
N. 7	W	56
N. 12	W	62
N. 34	W	25
		539.



In pursuance of the Several acts of assembly directing the recovery of the principal and interest due to the Commonwealth from persons holding lands by virtue of Locations or other Office titles issued from or under the proprietary government and by the authority of the Board of property I have this 2<sup>d</sup> day of May 1828 Surveyed the above described tract of Three hundred and five acres and a half and Allowance of Six percent on Conemaugh about two miles from the mouth of Blacklick on the north Side of Conemaugh Situate in Blacklick township Indiana County By Virtue of a location dated 3<sup>d</sup> of April 1769 N<sup>o</sup> 1709 granted to Robert Culbertson

To Gabriel Heister Esquire } John Taylor D.S.  
 Surveyor General.

N.B. The above Survey is the whole of a Survey made to Thomas McArthur on the 30<sup>th</sup> of October 1784 By warrant of the 23<sup>d</sup> of August 1784. Tho. McArthur Pat<sup>e</sup>

IN TESTIMONY that the above is a copy of the original remaining on file in the Department of Internal Affairs of Pennsylvania, made conformably to an Act of Assembly approved the 16th day of February, 1833, I have hereunto set my Hand and caused the Seal of said Department to be affixed at Harrisburg, this twentieth day of October, 1908.

*Henry Howard*  
 Secretary of Internal Affairs.